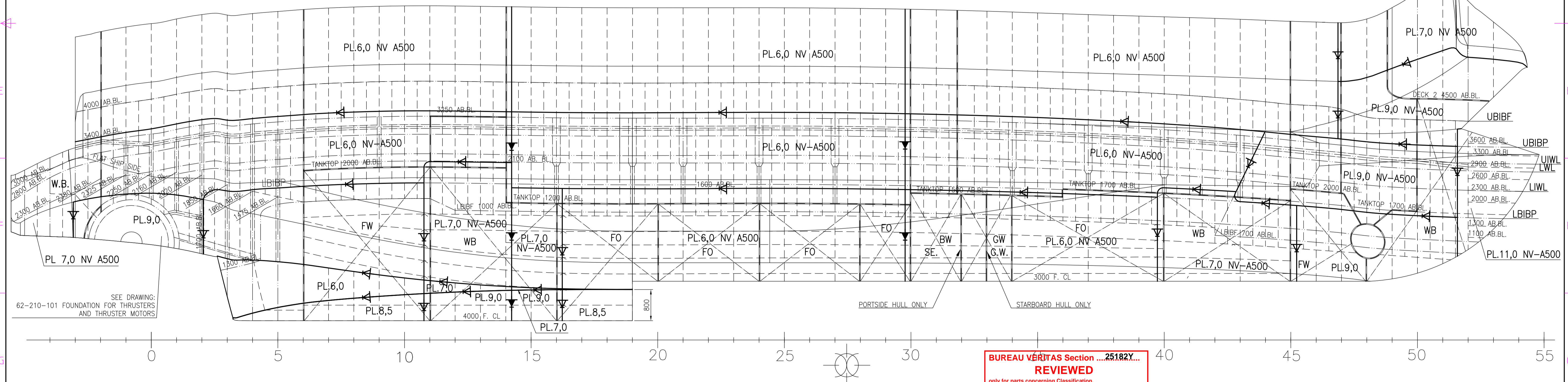


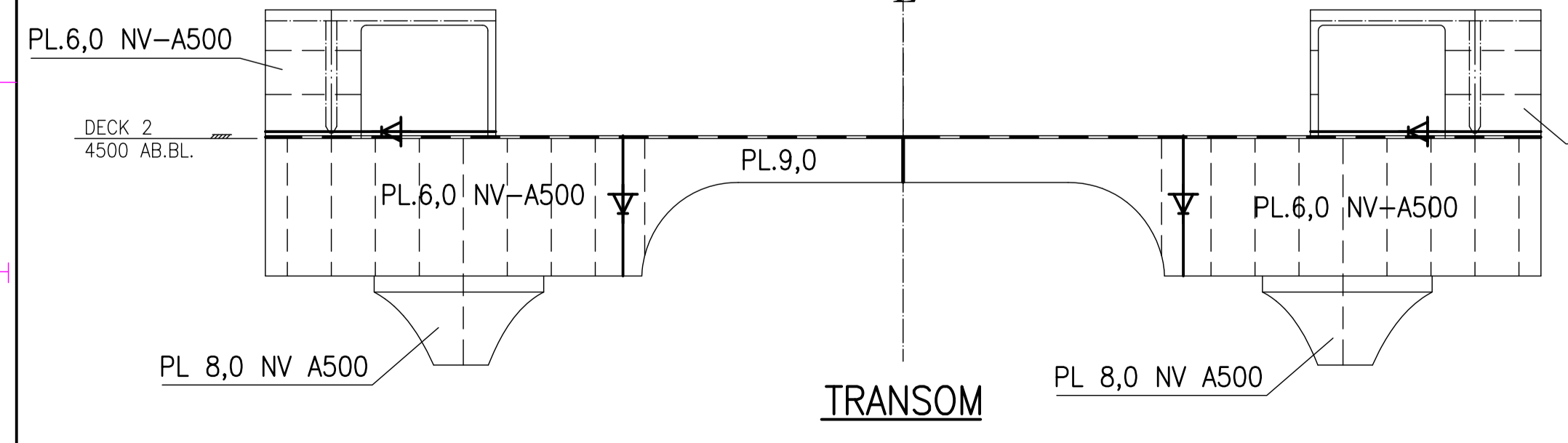
OUTER PART OF SHELL

FRAME SPACING 650 mm, ICE FRAME SPACING 325 mm, WEB FRAME SPACING MAX. 1950 mm



INNER PART OF SHELL AND BOTTOM TUNNEL

FRAME SPACING 650 mm, ICE FRAME SPACING 325 mm, WEB FRAME SPACING MAX. 1950 mm



CORRESPONDING DRAWINGS:

- 62-200-101 WELDING TABLE
- 62-208-101 TRANSVERSE FRAMES AND BULKHEADS. SHEET 1 - 10
- 62-208-102 PROFILE AND PLAN. SHEET 1 - 2
- 62-208-106 FRAMING PLAN

REFERENCE DRAWINGS:

- 62-101-001 GENERAL ARRANGEMENT
- 62-152-101 TANKPLAN
- 62-200-101 REFERENCE DRAWING

BUREAU VERITAS Section ...25182Y...
REVIEWED
 only for parts concerning Classification.
 All particulars not shown on this drawing and concerning Classification to be as per Rules.
 Turku, 11-Mar-2014
 (Electronic document)
 The plan approval office

NOTE:

STEEL NV A36 TO BE USED U.N.O.
 All materials to be provided with BV certificate.
 Special ice-strength coating to be used in the ice-strengthened area.

This drawing is the property of MULTI MARITIME A/S. It must not be copied or divulged to any unauthorized third party without written authorization from MULTI MARITIME A/S. The receipt of the drawing implies that the conditions as mentioned herein are accepted.
 MULTI MARITIME A/S
 N-6801 FØRDE

2	Windows/stiffeners changed	17.02.14	HJB
1	Windows changed	02.01.14	HJB
0	Issued for production	21.11.13	HJB
REV.NO.	REVISION	DATE	APPR
CLIENT		CLIENT REFERENCE	
WESTERN BALTJA SHIPBUILDING			
TITLE		SCALE	DRAWN HJB 31.05.13
SHELL EXPANSION		1:50	CK'D
APPR.		PROJECT NO.	YARD NO.
APPR.		297/2	62
APPR.		FILE NAME	DRAWING NO.
APPR.		62-208-107	2
OWNER	YARD	CLASSIFICATION	MARITIME AUTH.
Approved		BV 24.09.13	
MULTI MARITIME AS P.O.Box 90, N-6801 FØRDE Phone 47 57823000 Telefax 47 57828451 E-mail: trimp@multi-maritime.no		PROJECT NO. 297/2	YARD NO. 62
		SFI 208	REV.NO. 2